

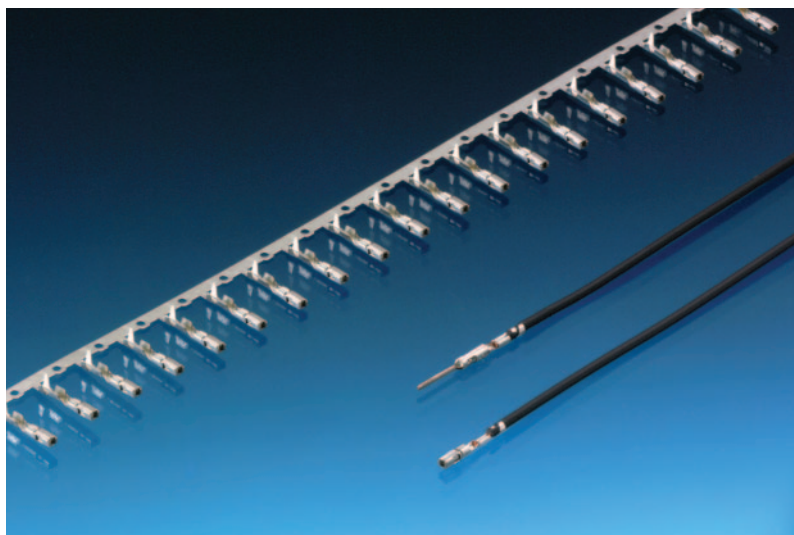
Micro-Sicma



0.64 mm female and male terminals

Features

- Micro-Sicma technology
- One-piece construction
- Suffix 23: with 180° orientation, 2.5 x 4.2 mm pitch
Suffix 24: with 90° orientation, 2.7 x 4.2 mm pitch
- High current carrying capacity
- Low contact mating force
- Compatible with a large range of connector sealing technologies (single wire sealing, grommet)
- Suitable for rear lock
- Selective gold-plated versions available



Performance characteristics

• Contact resistance:	< 3 mΩ
• Contact mating force:	< 4 N
• Contact unmating force:	< 2.5 N
• Current carrying capacity	
at 23°C up to approx.:	11 A
at 85°C up to approx.:	6.5 A
at 100°C up to approx.:	5.5 A
at 125°C up to approx.:	3.0 A

Packing

• No. of terminals per reel:	8000
• No. of reels per packing:	
- 5 for female terminals	
- 4 for male terminals	

Tooling

• Manual crimping tool:	Consult us
• Mini applicator:	Consult us

Part Numbers	Type	Wire size range (in mm ²)		Insulation Ø (in mm) Max.	Material	Plating
		Min.	Max.			
211 CC1S0123	Female	0.22	0.50	1.45	CuMg	Sn
211 CC1S1123	Female	0.50	0.60	1.80	CuMg	Sn
211 CC1S1323	Female	0.50	0.60	1.80	CuMg	Au 0.8 µm
211 CC1S0124	Female	0.22	0.50	1.45	CuMg	Sn
211 CC1S1124	Female	0.50	0.60	1.80	CuMg	Sn
211 CC1S1324	Female	0.50	0.60	1.80	CuMg	Au 0.8 µm
211 CL1S0123	Male	0.22	0.50	1.45	CuNi	Sn
211 CL1S1123	Male	0.50	0.60	1.80	CuNi	Sn
211 CL1S1323	Male	0.50	0.60	1.80	CuNi	Au 0.8 µm
211 CL1S0124	Male	0.22	0.50	1.45	CuNi	Sn
211 CL1S1124	Male	0.50	0.60	1.80	CuNi	Sn
211 CL1S1324	Male	0.50	0.60	1.80	CuNi	Au 0.8 µm

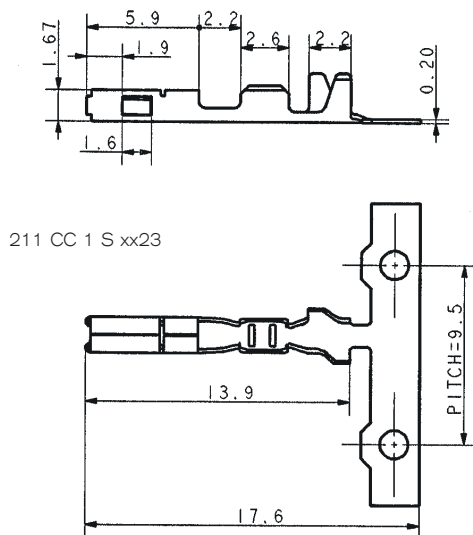
Micro-Sicma



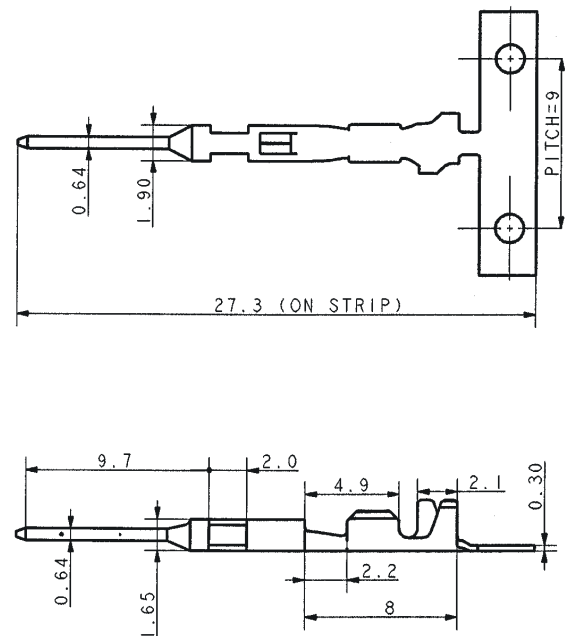
0.64 mm female and male terminals

Dimensional characteristics

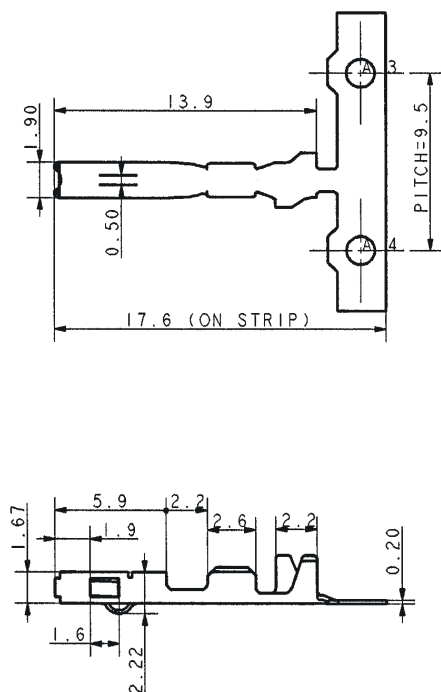
Female terminals - 90° polarization



Male terminals - 90° polarization



Female terminals - 180° polarization



Male terminals - 180° polarization

